

Typology
Mixed use
Holiday Chalets and Main Building

Site
Furx 25, 6835 Zwischenwasser,
Austria

Competition/Order type
1st prize

Client
F25 Projektgesellschaft

Cooperation
Rhombert BAU GmbH

Landscape design
Planstatt Senner

Interior design
Marika Marte Innenarchitektur

Photography
Albrecht I. Schnabel
René Dürr

Site area
12,436 m²

Building surface area
1,324 m²

Gross floor area
3,006 m²

Building volume
11,068 m³

Floor area 10 Holiday Chalets
1,046 m² incl. Loggias

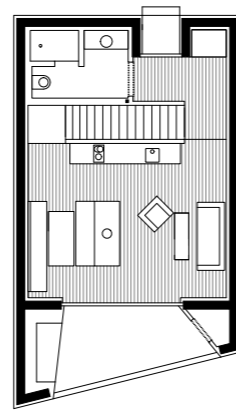
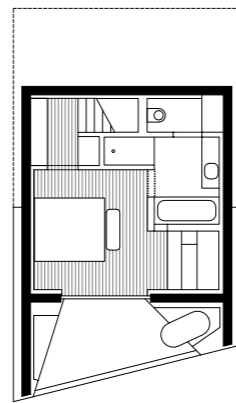
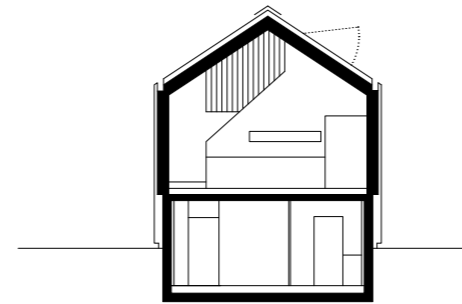
Start of planning phase
2018

Start of construction
2020

Completion
2021

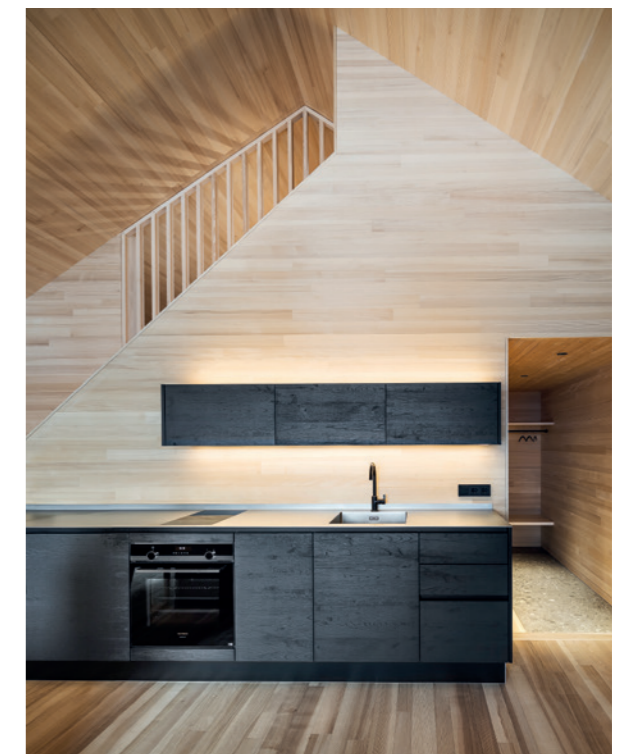
Construction cost
EUR 7 million

Peterhof, Alpe Furx
Zwischenwasser, Austria



Insights

The tension between local building traditions and materials and modern interpretation makes the new Alpe Furx development a memorable contribution to architectural quality in the Alps.



An architectural statement for a natural setting. The brief was to create an attractive holiday and leisure development to enhance the ski resort of Alpe Furx, with a new hospitality building replacing the old hotel, and ten chalets offering tranquillity and intimacy: a project on a sloping site that demanded both **flair and finesse**. Comprising a group of chalets and a main building, the key planning and design requirements for the new complex were careful treatment of the ground and the relationship between the structures, **formal beauty and high amenity values**. The result is a small development comprising three groups of four buildings arranged in a naturalistic manner around a central space. The chalets follow the same basic model, using reflection and layering to add variety according to position and access route. The main building promise carefully framed views of the mountains, valley and nearby chapel – and in winter, of course, the ski slopes. Sited below the chalets, it preserves these views, ensuring **clear vistas of the Alpine landscape**. The restaurant and sun deck, on the other hand, are both clearly visible from the approach road.

Wood inside and out, and stunning views. The two-storey wooden chalets, clad from top to bottom in larch shingles, are set back into the hillside. The roof design is emphasised by a skylight that showcases the heavens, while a **large picture window on each floor** offers views of the surrounding countryside. Inside, the entire shell is clad in light **silver fir**, providing a warm contrast to the outer skin, as does the furniture, designed in **black-stained ash, and maple**. The restaurant building echoes these materials with its silver-fir interior, solid concrete core with black, trowel-applied finish, maple and black-stained ash. The chalets, which each comprise a bedroom, a generous living/dining space with kitchen and wood-burning stove, a sauna and an outdoor hot tub, offer **premium spatial configuration** on both floors. The two storeys of the main building face west in a welcoming gesture; the restaurant and terrace provide seating for 120 people.