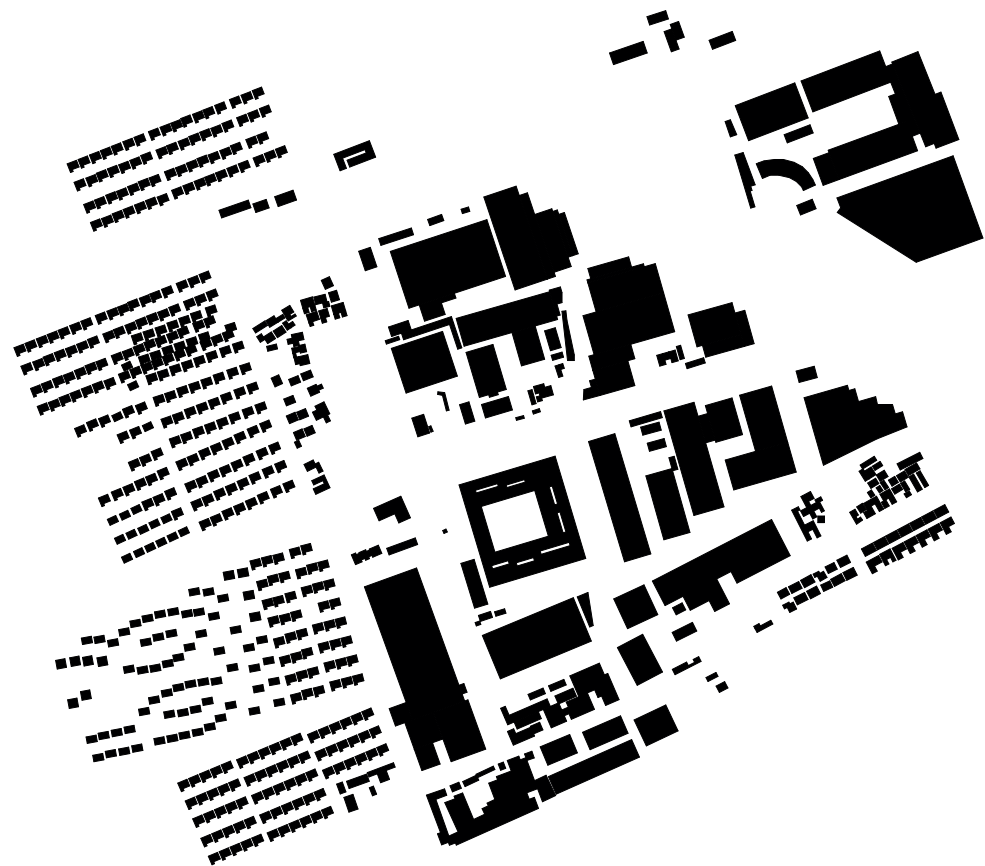




<b>Typology</b> Health	<b>Client</b> Shanghai Wu Mengchao Cancer Center co. Ltd. Shanghai, China	<b>Site area</b> 34,760 m <sup>2</sup>	<b>Start of planning phase</b> 2015
<b>Site</b> Shanghai, China	<b>Landscape design</b> Baumschlager Eberle Architekten	<b>Area of building</b> 14,678 m <sup>2</sup>	<b>Start of construction</b> 2016
<b>Competition/Order type</b> Direct order	<b>Interior design</b> Baumschlager Eberle Architekten	<b>Gross floor area</b> 34,464 m <sup>2</sup>	<b>Completion</b> 2019
<b>Award</b> -	<b>Photography</b> Wu Qingshan	<b>Building volume</b> 188,360 m <sup>3</sup> GFA overground and GFA underground	<b>Construction cost</b> EUR 103 million
		<b>Floor area</b> -	

Wu Mengchao  
Diagnostic and Treatment Centre  
Shanghai, China



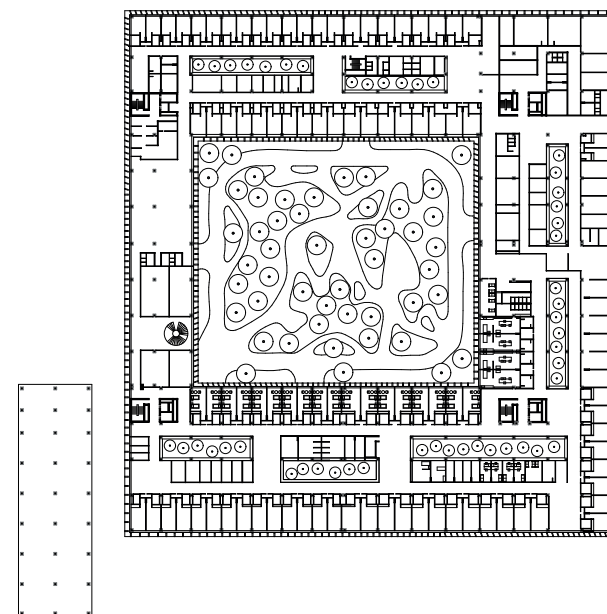


**Intelligent reuse of an existing building.** An oncology diagnostic and treatment centre was planned for an old industrial site in an unappealing part of Shanghai, close to the Formula 1 race track. The client, a foundation established by a doctor celebrated in China, wanted somewhere with the **atmosphere of a luxury hotel**. Instead of demolishing the old factory, the building's concrete walls – high-grade and still standing – were reused. The existing **L-shaped structure was supplemented by a second L and extended to form a rectangle with an interior courtyard**. This courtyard, conceived as the centre and heart of the clinic, forms a **hortus conclusus** or enclosed garden that is both introspective and generously shaped, an oasis of quiet amid the surrounding hustle and bustle. The height of the old building – three to four storeys – has been retained and determines the length and breadth of the courtyard, producing ideal proportions and a therapeutic atmosphere. Its **stylised, almost artificial landscape** with trees, carefully chosen plants and pathways has a fairy-tale feel. The courtyard also serves as a venue for concerts and other activities.



#### Insights

"The retention of existing structures can make a key contribution to sustainability. Here, an old factory was converted and extended rather than being demolished to produce a tabula rasa." Hugo Herrera Pianno



**A multi-functional façade.** A new façade melds the old and new parts of the complex into a **whole**. The sculptural nature of the façade with its aluminium panels provides **protection against sun, wind and rain** and an architecturally rich **interplay of light and shadow**. This sculptural effect is underscored by the entrance surrounds that project slightly from the façade. The exterior solar protection features minimise solar energy inputs and provide **excellent views** from inside the building, while making it **impossible to see in from the outside** and so guaranteeing patient privacy. Light and spacious areas inside the building – entrance, lobby, galleries with floor-to-ceiling windows, and wards, some with views of the trees in the narrow interior courtyard – and modern interior design using high-quality materials give the **impression of a stylish hotel** rather than a hospital, and emphasise the status of the centre and its target clientele. The luxuriously appointed patient rooms, including a number of suites, are a perfect match for the broader setting.